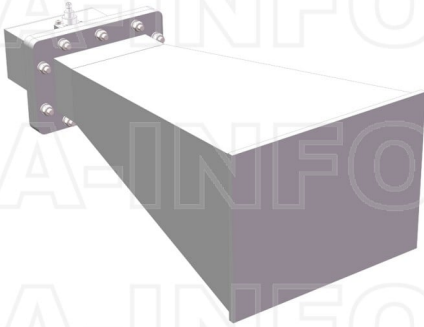


LB-430-10-C-SFSP0 Standard Gain Horn Antenna 1.7-2.6GHz 10dB Gain SMA Female

Standard Gain Horn Antenna Operating From 1.7GHz to 2.6GHz With a Nominal 10dB Gain With SMA Female Connector



Product Information

SKU	LB-430-10-C-SFSP0
-----	-------------------

Description

Standard Gain Horn Antenna LB-430-10-C-SFSP0, operating from 1.7 to 2.6GHz with a nominal 10dB gain and low VSWR 1.25:1 with SMA Female connector output. The model LB-430-10-C-SFSP0 has uniform gain through its frequency span, providing efficient performance characteristics and directionality. It can handle 50W continuously and 3000W peak power. Constructed of lightweight corrosion-resistant aluminum, the horn comes with a specially designed weatherproof radome which provides excellent protection against the rain and dust but has very little loss across the full operating frequency band. This standard gain horn antenna is linearly polarized and ideally suited for EMI testing, direction finding, surveillance, antenna gain and pattern measurements and other applications.

Technical Specification

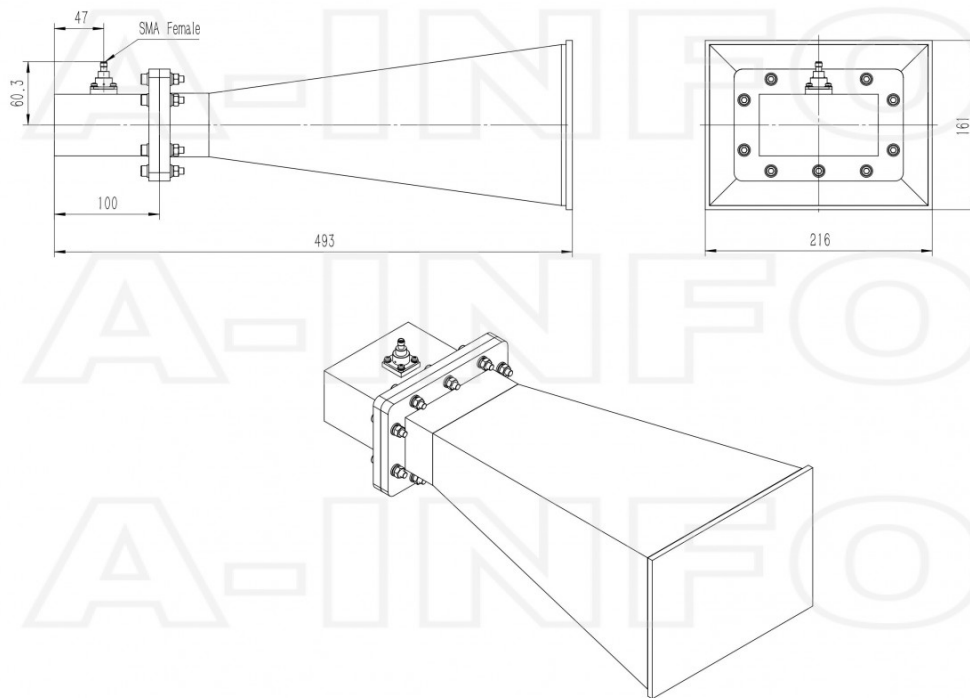
Electrical Specification		Interface	
Frequency, Min (GHz)	1.7	Output Type	Coaxial
Frequency, Max (GHz)	2.6	Connector	SMA
Waveguide Type	Rectangular	Connector Gender	Female
Waveguide Size EIA WR	WR430	Mechanical Specification	
Gain, Typ (dBi)	10	Figure	C Type
Polarization	Linear	Body Material	Al
3dB Beamwidth, E-Plane, Typ (Deg.)	48	Finish	Chemical Conversion Coating, Gray Paint
3dB Beamwidth, H-Plane, Typ (Deg.)	44	Size, W (mm)	216
Cross Pol. Isolation, Typ (dB)	35	Size, H (mm)	161
VSWR, Typ	1.25:1	Size, L (mm)	493
Impedance, (Ohm)	50	Weight, (kg)	2.61
Power Handling, CW, (W)	50		
Power Handling, Peak, (W)	3000		

Additional Information

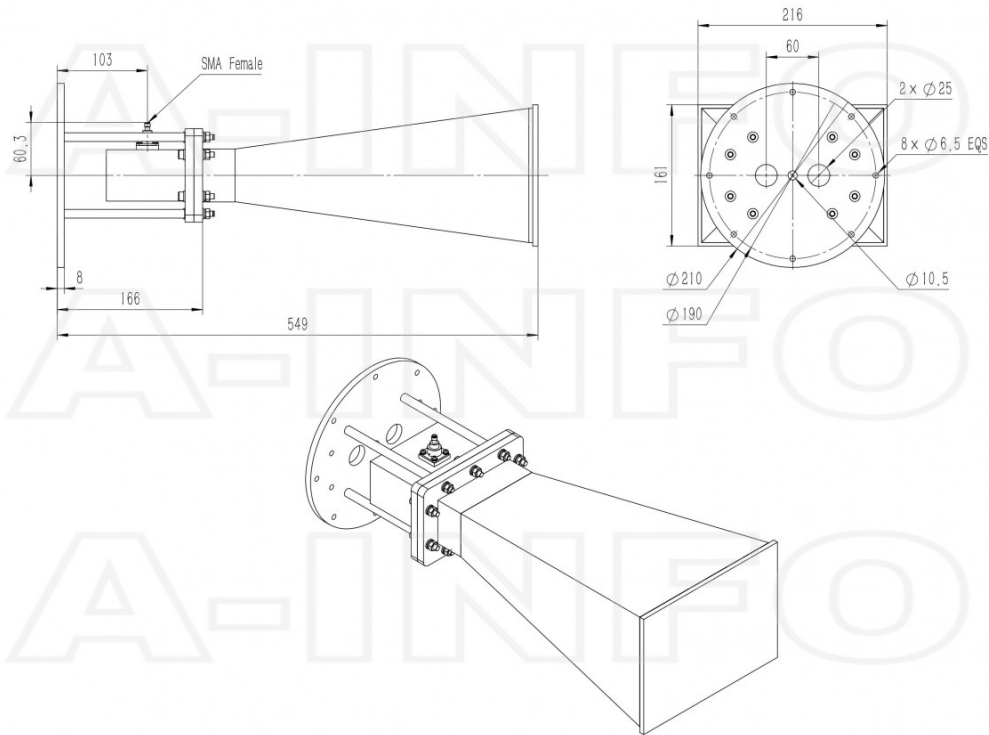
Application	Outdoor, Waterproof and Dustproof, Fixed	Solution for	Gain Reference Antenna Measurement Reflector Feed Far-field Measurement System Intergration Material Measurement
-------------	------------------------------------------	--------------	---------------------------------------------------------------------------------------------------------------------------------

Outline Drawing

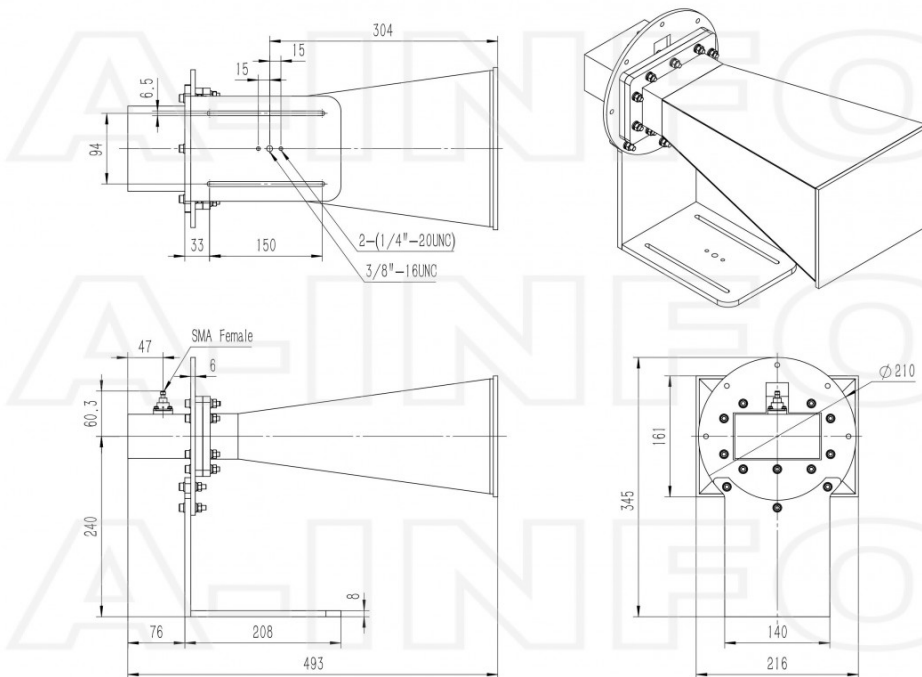
SMA Female Output with Radome (Option, P/N: LB-430-10-C-SFSP0, Outdoor Application)



SMA Female Output with Round Mounting Bracket & Radome (Option, P/N: LB-430-10-C-MB & LB-430-10-C-SFSPO, Outdoor Application)

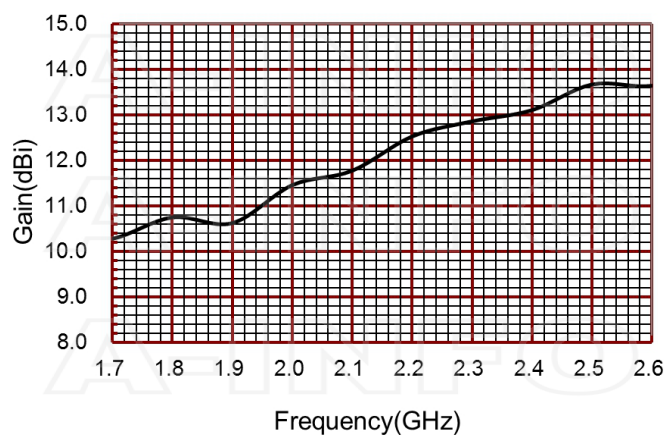


SMA Female Output with L Type Mounting Bracket & Radome (Option, P/N: LB-430-10-C-L & LB-430-10-C-SFSPO, Outdoor Application)

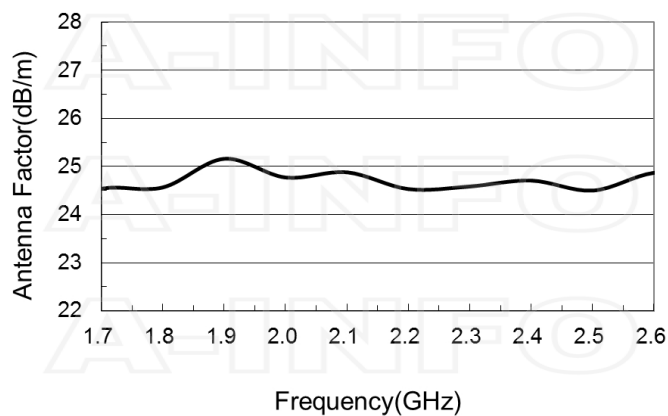


Typical Test Results

Gain



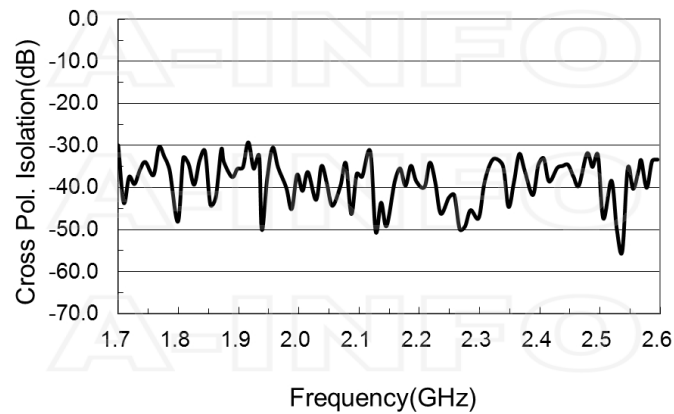
Antenna Factor



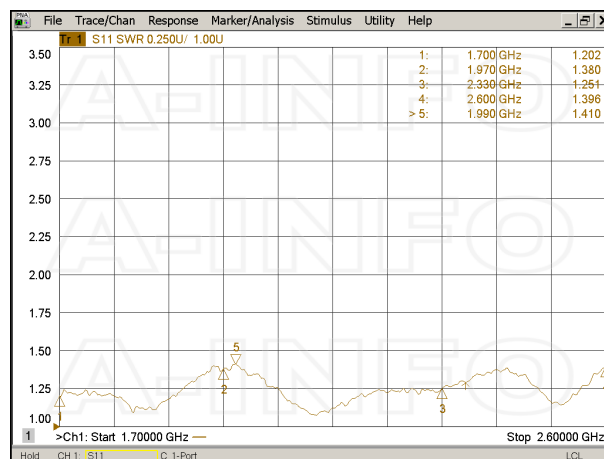
Antenna Factor (Table)

Frequency(GHz)	Gain(dBi)	Antenna Factor(dB/m)
1.7	10.28	24.54
1.8	10.75	24.56
1.9	10.62	25.16
2.0	11.46	24.77
2.1	11.77	24.88
2.2	12.53	24.53
2.3	12.86	24.58
2.4	13.10	24.71
2.5	13.67	24.50
2.6	13.64	24.87

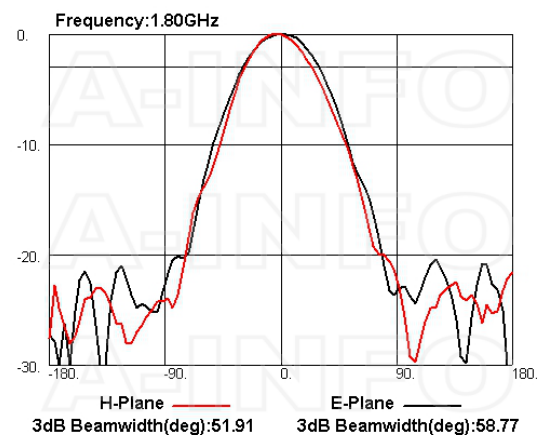
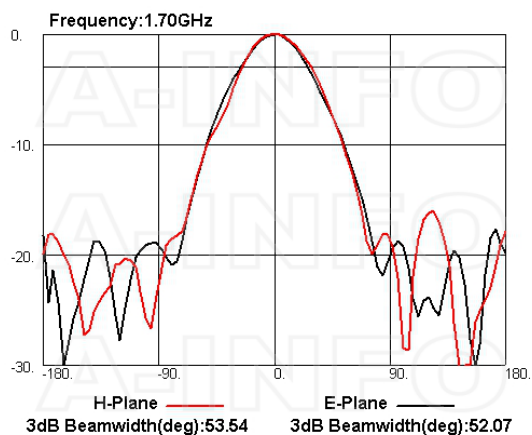
Cross Polarization Isolation

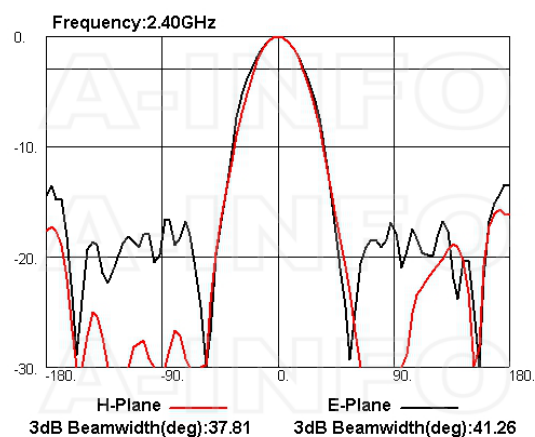
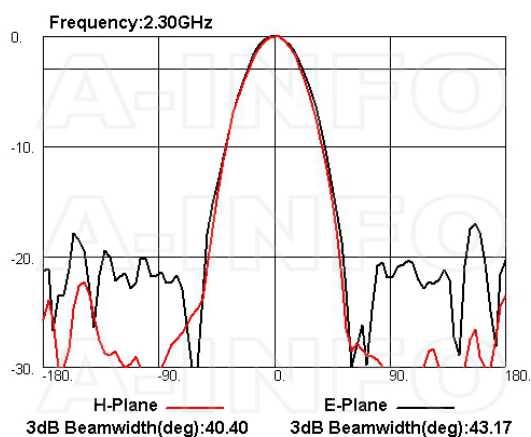
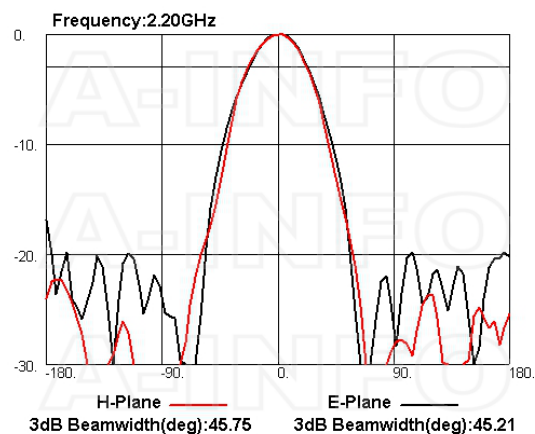
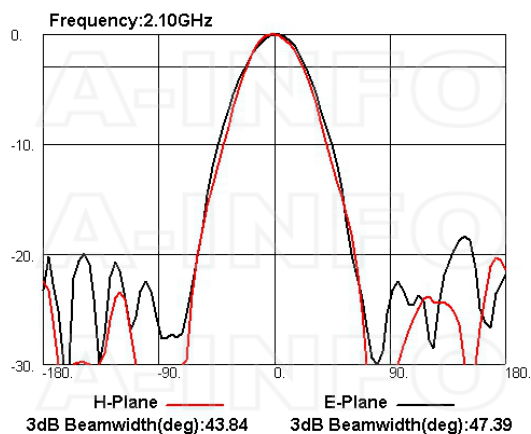
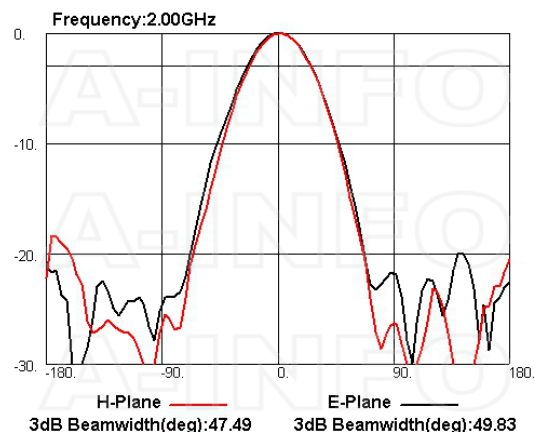
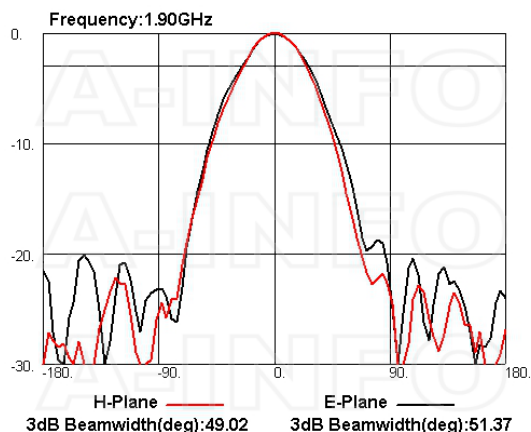


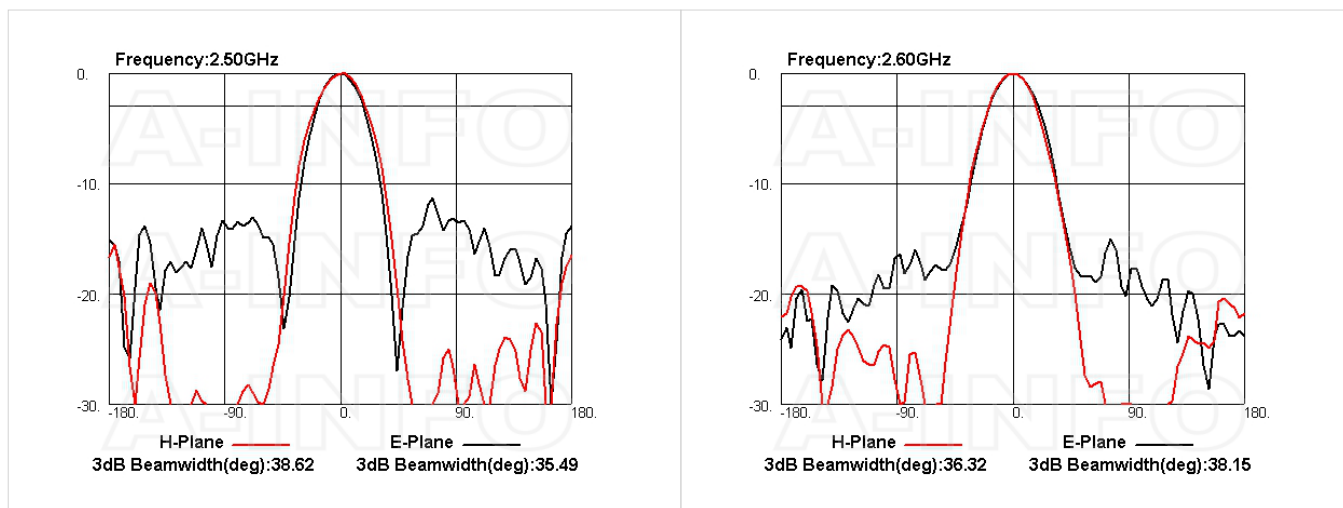
VSWR



Pattern







Related Products



LB-430-10-C-MB Round Type Mounting Bracket



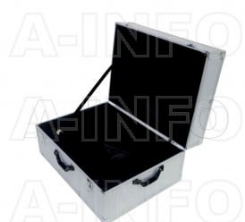
LB-430-10-C-L L Type Mounting Bracket



LB-430-10-C-MA Stinger Type Mounting Bracket



Tripod_50Kg AI Alloy Tripod



Carrying Case_LB-430-10-C AI Alloy Carrying Case



SM-SM-A050-1000 Flexible Cable Assembly 1000mm DC- 26.5GHz SMA Male to SMA Male



SM-SM-A050-1500 Flexible Cable Assembly 1500mm DC- 26.5GHz SMA Male to SMA Male



SM-SM-A050-2000 Flexible Cable Assembly 2000mm DC- 26.5GHz SMA Male to SMA Male



SM-SM-A050-3000 Flexible Cable Assembly 3000mm DC- 26.5GHz SMA Male to SMA Male



SM-SM-A050-5000 Flexible Cable Assembly 5000mm DC- 26.5GHz SMA Male to SMA Male



SM-SM-A050-10000 Flexible Cable Assembly 10000mm DC- 26.5GHz SMA Male to SMA Male



SM-SM-A080-200 Flexible Cable Assembly 200mm DC- 26.5GHz SMA Male to SMA Male



SM-SM-A080-300 Flexible Cable
Assembly 300mm DC- 26.5GHz
SMA Male to SMA Male



SM-SM-A080-500 Flexible Cable
Assembly 500mm DC- 26.5GHz
SMA Male to SMA Male



SM-SM-A080-1000 Flexible Cable
Assembly 1000mm DC- 26.5GHz
SMA Male to SMA Male



SM-SM-A080-1500 Flexible Cable
Assembly 1500mm DC- 26.5GHz
SMA Male to SMA Male



SM-SM-A080-2000 Flexible Cable
Assembly 2000mm DC- 26.5GHz
SMA Male to SMA Male



SM-SM-A080-3000 Flexible Cable
Assembly 3000mm DC- 26.5GHz
SMA Male to SMA Male



SM-SM-A080-5000 Flexible Cable
Assembly 5000mm DC- 26.5GHz
SMA Male to SMA Male



SM-SM-A080-10000 Flexible
Cable Assembly 10000mm DC-
26.5GHz SMA Male to SMA Male



SM-SM-A080-20000 Flexible
Cable Assembly 20000mm DC-
26.5GHz SMA Male to SMA Male



SM-SM-A100-100 Flexible Cable
Assembly 100mm DC- 18GHz
SMA Male to SMA Male



SM-SM-A100-200 Flexible Cable
Assembly 200mm DC- 18GHz
SMA Male to SMA Male



SM-SM-A100-300 Flexible Cable
Assembly 300mm DC- 18GHz
SMA Male to SMA Male



SM-SM-A100-500 Flexible Cable
Assembly 500mm DC- 18GHz
SMA Male to SMA Male



SM-SM-A100-1000 Flexible Cable
Assembly 1000mm DC- 18GHz
SMA Male to SMA Male



SM-SM-A100-1500 Flexible Cable
Assembly 1500mm DC- 18GHz
SMA Male to SMA Male



SM-SM-A100-2000 Flexible Cable
Assembly 2000mm DC- 18GHz
SMA Male to SMA Male



SM-SM-A100-3000 Flexible Cable
Assembly 3000mm DC- 18GHz
SMA Male to SMA Male



SM-SM-A100-5000 Flexible Cable
Assembly 5000mm DC- 18GHz
SMA Male to SMA Male

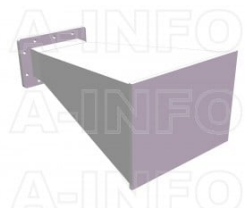


SM-SM-A100-10000 Flexible
Cable Assembly 10000mm DC-
18GHz SMA Male to SMA Male

Similar Products



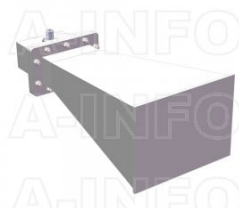
LB-430-10-A Standard Gain Horn
Antenna 1.7-2.6GHz 10dB Gain
Rectangular Waveguide Interface



LB-430-10-ASPO Standard Gain
Horn Antenna 1.7-2.6GHz 10dB
Gain Rectangular Waveguide
Interface



LB-430-10-C-NF Standard Gain
Horn Antenna 1.7-2.6GHz 10dB
Gain N Type Female



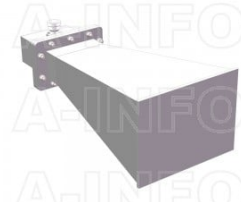
LB-430-10-C-NFSPFO Standard
Gain Horn Antenna 1.7-2.6GHz
10dB Gain N Type Female



LB-430-10-C-SF Standard Gain
Horn Antenna 1.7-2.6GHz 10dB
Gain SMA Female



LB-430-10-C-7/16F Standard
Gain Horn Antenna 1.7-2.6GHz
10dB Gain 7/16(DIN) Female



LB-430-10-C-7/16FSPO Standard
Gain Horn Antenna 1.7-2.6GHz
10dB Gain 7/16(DIN) Female

About this Datasheet

● Product Information

Product Link:
<https://www.ainfoinc.com/lb-430-10-c-sfspo-standard-gain-horn-antenna-1-7-2-6-ghz-10db-gain-sma-female>
Data subject to change without notice.
© A-INFO INC. 2023. All Rights Reserved

● Contact Us

Address:dd
60 Tesla, Irvine, CA 92618,
USA

Website:
www.ainfoinc.com

Email:
sales@ainfoinc.com

● Phone & Fax

Phone:
+1-949-639-9688
+1-949-639-9608

Fax:
+1-949-639-9670